



**PROCEDURE FOR THE SITE ASSEMBLY AND
INSTALLATION OF A LEFT HUNG EXTERNAL
STAIRCASE WITH A 1600MM x 1200MM SINGLE
EXIT LANDING**

A) Preparation Notes

- 1) This document should be read in conjunction with the appropriate standard installation procedures for single and double stacked steel units via crane or HIAB.
- 2) This procedure requires a minimum of two suitably qualified and competent personnel at all times.
- 3) The installation team should ensure that they are fully conversant with all aspects of this procedure and the detailed assembly diagrams overleaf prior to the commencement of work.
- 4) The installation team should ensure that safe handling techniques are adopted at all times.
- 5) Alsim System Buildings Limited will not be held responsible for any incident, accident or injury, resulting from the installation of a landing, staircase or related item, as described herein.

B) Suggested Basic Safety Equipment

Required for all Personnel

- 1) Safety Boots
- 2) High Visibility Clothing
- 3) Hard Hat
- 4) Protective Gloves suited to this application
- 5) Safety Eyewear

C) Tools & Equipment Required

- 1) Crane or HIAB
- 2) Ladder
- 3) Socket Set to suit fixings listed below
- 4) Spirit Level

D) Parts Check List

- | | |
|---|--|
| <ol style="list-style-type: none"> 1) Staircase Assembly, item 1 (x1) 2) Landing Support Leg, item 2 (x2) 3) Brace Bar, item 3 (x1) 4) Handrail Assembly, item 4 (x2) 5) Landing Platform Assembly, item 5 (x1) 6) Landing Handrail Assembly, item 6 (x1) | <ol style="list-style-type: none"> 7) Landing Handrail Assembly, item 7 (x1) 8) M12 x 80mm M/S Bolt (x4) 9) M12 x 50mm M/S Bolt (x3) 10) M12 x 30mm M/S Bolt (x4) 11) M12 M/S Nut (x7) 12) M12 Flat M/S Washer (x18) |
|---|--|

E) Step by Step Instructions

- 1) The staircase can be hung from the left of the landing only. The diagrams overleaf illustrate a landing of dimensions 1600mm x 1200mm, and the following procedure applies to this size only.
- 2) Position Landing Handrail Assembly (Item 7) into locating sockets on Landing Platform (Item 5), making sure the kick plate is on the inside of the landing (see Figure 2). Secure by tightening the pre-installed bolts.
- 3) Position Landing Handrail Assembly (Item 6) into locating sockets on Landing Platform (Item 5), making sure the kick plate is on the inside of the landing (see Figure 3). Secure by tightening the pre-installed bolts.
- 4) Lift Landing Assembly, created by steps 2 and 3 above, into position using a suitable crane or HIAB.
- 5) Position both Landing Support Legs (Item 2) into locating sockets (see Figure 4). Please note that the Landing Support Legs are adjustable to suit ground conditions.
- 6) Locate Landing Assembly, created by steps 2 and 3 above, to the Top Stacked Unit (see Figure 5) using the unit's integrated staircase bracket. Secure using the designated fixings. This step will require the use of a ladder to reach the underside of the Landing Assembly. The ladder must be footed, or otherwise secured to avoid slippage, at all times.
- 7) Ensure Landing is level using spirit level prior to final fixing.
- 8) Secure both Landing Support Legs (Item 2) into position using designated fixings (see Figure 4).
- 9) Locate Brace Bar (Item 3) between both Support Legs (Item 2) (see Figure 6). Secure using the designated fixings.
- 10) Fit both Handrails (Item 4) into locating sockets on the outer side of Staircase Assembly (see Figure 7) and secure by tightening the pre-installed bolts.
- 11) Lift Staircase Assembly (Item 1) into position using a suitable crane or HIAB.
- 12) Locate Staircase Assembly (Item 1) to Landing Platform (see Figure 8) using the three locating points on the Landing Platform. Secure using the designated fixings. This step will require the use of a ladder to reach the underside of the Landing Assembly. The ladder must be footed, or otherwise secured to avoid slippage, at all times.

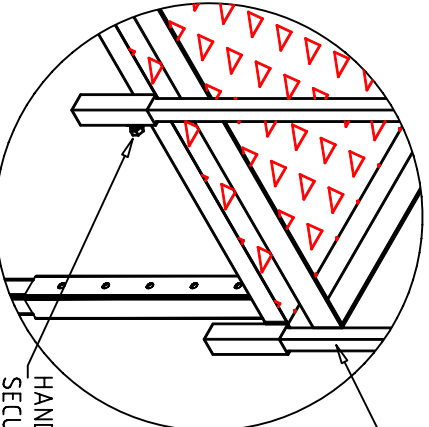
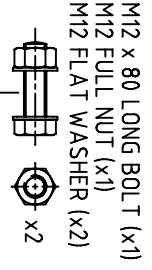


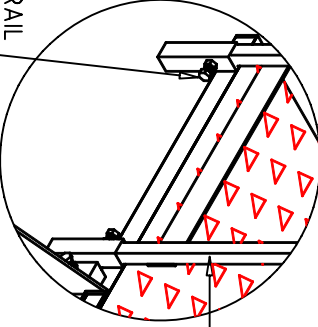
FIGURE 1

FIGURE 2
 ENLARGED DETAIL SHOWING
 LANDING RAIL FIXINGS



M12 x 80 LONG BOLT (x1)
 M12 FULL NUT (x1)
 M12 FLAT WASHER (x2)
 x2

FIGURE 3
 ENLARGED DETAIL SHOWING
 LANDING RAIL FIXINGS



M12 x 30 LONG BOLT (x1)
 M12 FLAT WASHER (x1)
 x4

FIGURE 5
 ENLARGED DETAIL SHOWING
 LANDING TO STEEL UNIT FIXINGS

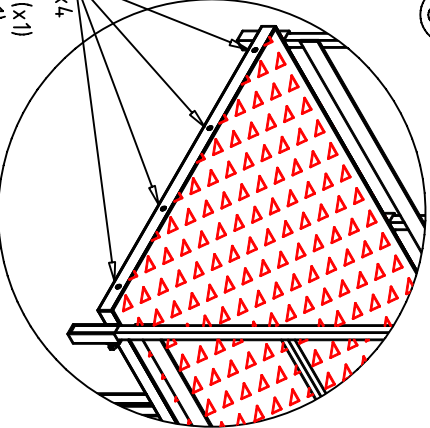
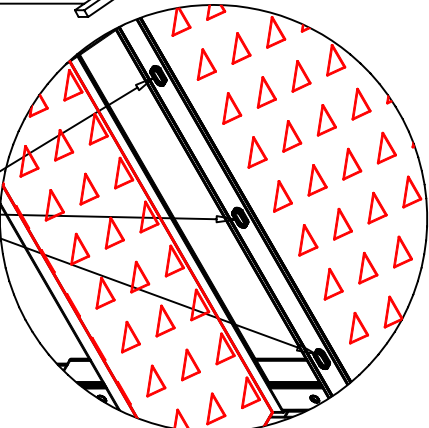
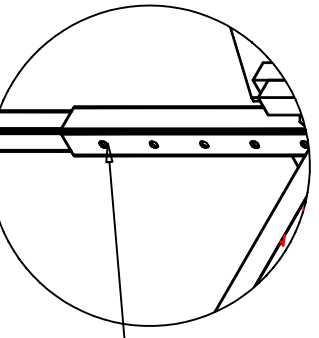


FIGURE 8
 ENLARGED DETAIL SHOWING
 STAIRCASE TO LANDING FIXINGS



M12 x 50 LONG BOLT (x1)
 M12 FULL NUT (x1)
 M12 FLAT WASHER (x2)
 x3

FIGURE 4
 ENLARGED DETAIL SHOWING
 SUPPORT LEG FIXINGS



M12 x 80 LONG BOLT (x1)
 M12 FULL NUT (x1)
 M12 FLAT WASHER (x2)
 x2

FIGURE 6
 ENLARGED DETAIL SHOWING
 BRACE BAR FIXINGS

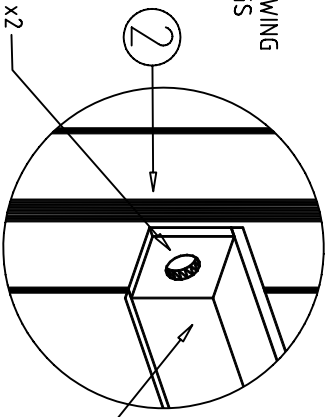
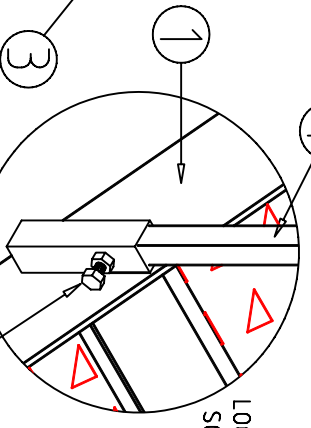


FIGURE 7
 ENLARGED DETAIL SHOWING
 LOCATING SOCKET FIXINGS



LOCATING SOCKET
 HANDRAIL
 SECURING BOLT
 x2

VIEW ON ARROW 'A'